



SOFest

+

IMPACT PARTNERS

16 – 18th June 2026

Essex, UK

Connect. Learn. Share.

A facilitator helps
guide a group through
a process to achieve a
specific outcome.

Hi I'm **Kirsty Lewis**,
founder of **School of
Facilitation**.

Let me guide you
through this deck.



The logo for the School of Facilitation (SO F) features the letters 'S', 'O', and 'F' in a large, white, sans-serif font. The letter 'O' is replaced by a circular arrangement of small, pink, dot-like shapes. Below the letters, the text 'School of Facilitation' is written in a smaller, white, sans-serif font.

SO F

School of Facilitation

A global community of facilitators and trainers, coming together to think, do and be better.

Consultancy

Enabling in-house facilitators, trainers and leaders to **design efficiently, build learner engagement** and **run interactive workshops with ease.**

Collective

A place, a space and a time where you can come and learn more about how to be an effective facilitator and trainer.

Including SOF Classes, SOF Gatherings & SOF Community Pod

What is SOFest?

WHAT?

A 3-day, 2-night festival
for facilitators, trainers and coaches
to connect, learn, share and recharge

WHERE?

Set in the beautiful Essex countryside
60-minutes from London

WHEN?

16 – 18 June 2026

9 speakers

insights on
running a
successful
business & latest
training trends

4 learning
zones
16 workshops

on facilitation
practice, clients,
running a
business

100 facilitators &
trainers
together to
connect, learn,
& share

Morning rituals
&
Afternoon
activities

to encourage
people to focus
on their own
well-being

Who attends SOFest?

Facilitators, trainers, educators, coaches and consultants

Our community is made up of brilliant independent facilitators, coaches, trainers, educators, and consultants, many of whom are freelancers or small business owners.

Predominantly women aged 35–60, our attendees are values-led professionals who care deeply about learning, growth, and creating impact in the world.



Why inclusion matters

SO Fest is committed to making this experience accessible.

We believe that powerful learning and rich connection should be available to everyone, not just those who can afford it.

Inclusion isn't a buzzword; it's a guiding principle. And we know that our work is stronger, deeper, and more impactful when more diverse voices are in the room

What is an impact partner?

- At SOFest, we believe in breaking barriers and making learning experiences accessible to all.
- As an **impact partner**, you have the unique opportunity to help bridge the gap for individuals from underrepresented groups enabling them to access workshops, networking opportunities and skill development that would otherwise be out of reach.
- Your partnership is more than sponsorship, It is about creating impact that goes beyond the festival gates.

The impact of your support

Your contribution will:

- Fund access to a 3-day immersive learning experience
- Provide resources and support tailored to the participant's needs
- Create real opportunities for connection, skill-building, and confidence
- Help early-career or underrepresented facilitators build visibility and community

Stories of Change

"Having someone believe in me enough to gift a ticket made all the difference.

I walked into SOFest unsure if I belonged—and walked out knowing I had a place in this community.

I made friends, learned deeply, and left with clarity and confidence."

2025 Impact Ticket Recipient

Create meaningful change at SOFest

**Impact
Partner**

**10
partnerships**

£1600 +VAT

**Our
inclusion
mission**

**Deadline
30th March
2026**

The Ask

Fund access cover cost of tickets

Support resources provide materials & resources tailored to participants needs

Amplify diversity contribute to a more inclusive festival experience



The value of being an impact partner

Share your story

We will celebrate your support on our socials, newsletter & website



Measurable Impact

A post-event impact story to share with your own audience

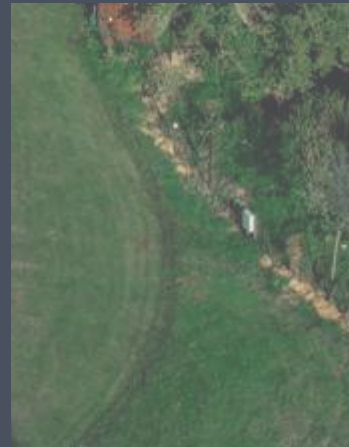
Positive brand alignment

Seen as a leader in inclusion, accessibility & community empowerment



Part of the journey

Become a mentor to whoever receives your support



Foster Inclusion

Help create a festival environment where diverse voices & perspectives are heard, valued, seen

